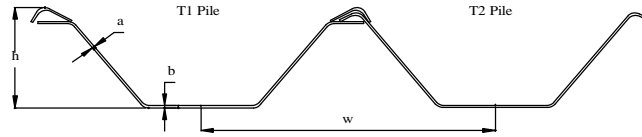


ESC B-SERIES WIDE PROFILE SHEET PILES



ESC Sheet Pile Type	Unit Width w (m)	Dimensions			Sectional Area Per wall Length cm ² /m	Unit Weight Per wall Width kg/m ²	Coating Area Both Sides Per wall Width m ² /m	Moment of Inertia Per wall Width cm ⁴ /m	Modulus of Section Per wall Width cm ³ /m
		a	b	h					
		mm	mm	mm					
ESC6B	0.90	5.0	5.0	367.0	84.1	66.0	3.044	17,160	630
ESC8B	1.15	6.0	6.0	433.0	95.1	75.0	2.896	25,980	840
ESC12B	1.20	6.0	10.0	417.0	104.2	82.0	2.785	33,630	1210
ESC14B	1.10	8.0	8.0	469.0	132.7	104.0	3.036	45,060	1390
ESC16B	1.20	8.0	8.0	544.0	134.4	106.0	3.113	59,010	1600
ESC18B	1.30	8.0	12.0	487.0	139.4	109.0	2.878	59,910	1830
ESC20B	1.15	9.0	9.0	565.0	159.1	125.0	3.254	76,230	2010
ESC22B	1.25	9.0	14.0	523.0	161.9	127.0	2.999	75,360	2250
ESC25B	1.20	9.0	15.0	539.0	173.2	136.0	3.118	86,900	2510
ESC30B	1.15	10.0	16.0	564.0	199.9	157.0	3.269	106,150	3020
ESC32B	1.15	10.0	18.0	560.0	211.2	166.0	3.264	114,800	3280
ESC36B	1.05	10.0	19.0	617.0	225.2	175.0	3.585	133,530	3600
ESC40B	1.40	12.0	18.0	639.0	233.3	183.0	3.191	166,920	4090
ESC46B	1.45	15.0	23.0	642.0	279.4	217.0	3.048	187,470	4600
ESC50B	1.40	15.0	23.0	640.0	293.7	231.0	3.174	207,630	5020
ESC60B	1.50	15.0	23.0	779.0	300.7	236.0	3.339	289,730	6100
ESC70B	1.50	18.0	27.0	777.0	356.9	280.0	3.323	343,070	7170

Description:

'U' shape fully interlocking medium gauge wide profile sheet pile, fitted with angle clutch mechanism. Nominal width 900mm to 1500mm.

Characteristics:

Mostly a medium strength Sheet Pile, suitable for all earth pressures using slightly thicker material on average than the A series.

Clutch mechanism provides effective cutoff in most soils.

Suited for most soil types between soft and hard.

Suitable for permanent and temporary works and low reuse situations depending on the type.

For Example: an ESC8B with a core thickness of 6mm and a flange thickness of 6mm will have a very low reuse capability. However, an ESC30B with a core thickness of 10mm and a flange thickness of 16mm will naturally have a better reuse capability. Of course, the client must in turn establish the necessary section modulus that the project requires choose accordingly...taking into consideration Engineering and Commercial Requirements.

Recommended Applications:

Drains/Canals
Low embankments
Coffer Dams
Shallow excavations
River Works
Pipelines

Driving Characteristics

Item	Parameter	Value
1	Optimal Soil Type	Soft-Firm
2	Maximum Driving Length	12.0 metres up to ESC8B. 15.0 metres up to the ESC16B. From ESC18B the length can be in excess of 24 metres.
3	Maximum internal corner angle*+	77 degrees
4	Maximum external corner angle*+	8 degrees

* Angle refers to deviation off straight driving line

*+ If required angle exceeds allowance, a corner pile should be used

- Notes:**
- Sheet pile properties based on effective section design as per BS5950-1998 Part 5. Section can develop full yield stress without onset of panel buckling
 - Computation of modulus considers bending in both directions. Lowest resulting value selected.

All sheet piles are available in S235, S275 and S355 steel. Grades such as S240, S270, S320, S390, S430 and other grades are available upon request.

For assistance in selecting the correct sheet pile for your application or custom designing your own sheet pile, please contact one of our representatives. Sheet pile specification sheets are to be used by experienced designers. It is recommended that users refer to ESC for free assistance in correct sheet pile selection.